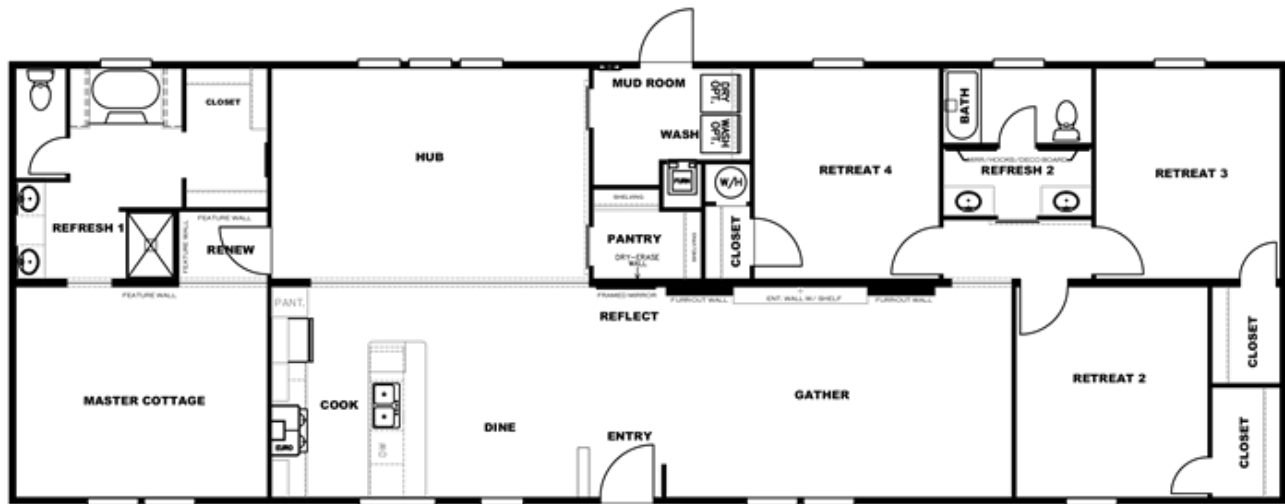




## THE BREEZE II



**THE BREEZE II** Floor plan number: RUS071268ALAB  
4 beds • 2 baths • 2128 sq.ft. • 28' width • 76' depth



Our home building facilities invest in continuous product and process improvements. Plans, dimensions, features, materials, specifications and availability are subject to change without notice or obligation. Renderings and floor plans are representative likenesses of our homes and may differ from the actual homes. We invite you to tour a Home Center near you and inspect the highest value in quality housing available or call (205) 339-5397 to speak with a Home Consultant. Copyright 2017, CMH. All rights reserved.

## CLAYTON HOMES-NORTHPORT

4401 MCFARLAND BLVD.  
NORTHPORT, AL 35476

Monday - Thursday: 9am - 6pm

Friday: 9am - 5pm

Saturday: 9am - 5pm

Sunday: Closed

(205) 339-5397